

The background of the image shows a person's hands applying a clear, protective film to a glass window. The film is being smoothed out, and there are some reflections and light streaks visible. The overall scene is brightly lit, suggesting an outdoor or well-lit indoor environment. The logo for Graffiti Shield Inc. is overlaid on the image. The logo consists of the words "GRAFFITI SHIELD" in a bold, blue, sans-serif font with a slight 3D effect. To the right of "SHIELD" is the word "INC." in a smaller, black, sans-serif font. The logo is positioned in the upper middle part of the image.

GRAFFITI SHIELD^{INC.}

HOLISTIC APPROACH TO GRAFFITI CONTROL

Mirror Shield Tag Filler Directions

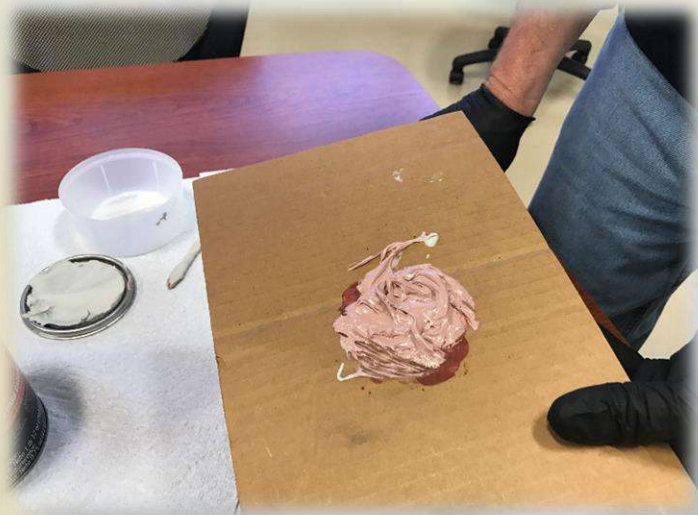


Mirror Shield Tag Filler:

Filling a tag or scratch in a mirror is easy and quick. Please follow these directions to get the best results.

Items needed:

- 1 Can of Bondo or auto body filler with hardener
- Mixing spoon or popsicle stick
- Hard card
- Sanding block or sand paper 220 grit recommended
- Paper towels
- Spray bottle filled with filtered water and slip solution
- 6" Triumph scraper with SS blade (new) or Razor blades
- Plastic gloves (optional)
- Piece of cardboard to mix filler and hardener



Mirror Shield Tag Filler:

- Layout paper towels to create a area to place all items on without touching counter top.
- Open filler package and puncture top of hardener.
- Identify the tag/s or scratch/s to fill.
- Use gloves and respirator (optional but recommended)
- Follow mixing directions on filler with hardener.
- Once mixed you must fill your areas quickly



Mirror Shield Tag Filler:

- Apply filler to areas to make sure you have complete coverage.
- Apply just enough filler to fill and cover all areas.
- Let filler dry 15-30 minutes depending on climate and time of year.





Mirror Shield Tag Filler:

- Take your scraper and keep flat on the surface and remove the excess filler.
- Do not remove within the scratch or tag with an edge of your scraper.
- Take your sanding block or sand paper and sand down the filler to make all areas flat. Do not take your edge and sand to make any substantial grooves within the scratch or tag.
- The scratch or tag will look more pronounce since it is filled with the filler.
- The surface should feel smooth to the touch.



Mirror Shield Tag Filler:

- Spray the surface with your solution making sure the entire surface is wet.
- Change you blade on your scraper.
- Scrape the surface as you would be prepping the surface for film.
- Wipe your edges well to make sure all filler remnants and dust are removed.
- Proceed with your normal film installation.



Before Filler



After Filler



Completed With
Mirror Shield Installed

